



Jana

2024 **DESIGNS**
FALL / WINTER

Jana

2024 **DESIGNS**
FALL / WINTER



M's DataFlow Jacket

-24A080030

-Features-

- * Men's 3L high-end mountaineering jacket with exceptional breathability and waterproof features.
- * Asymmetric color-blocking cut lines create a dynamic and vivid look.
- * Side pockets with bellow construction provide additional storage capacity.
- * Adjustable front and back hood ensure a snug fit around the head when worn.
- * Hood brim with moldable wire offers a structured edge for water drainage.
- * Front collar edge features adhesive reinforcement for a sharp, firm contour.
- * Pre-shaped sleeves with hook-and-loop fasteners effectively block wind.
- * Long underarm vents allow for efficient body heat release.

Fabric: FGCA00002-001D(HF庫存布)

Composition:

Face: 100%Nylon66

Back: 100%Nylon66

Fabric: FGCA00007-0001(HF庫存布)

Composition:

Face: 100%Nylon

Back: 100%Polyester

Mountaineering & Hiking

Jana

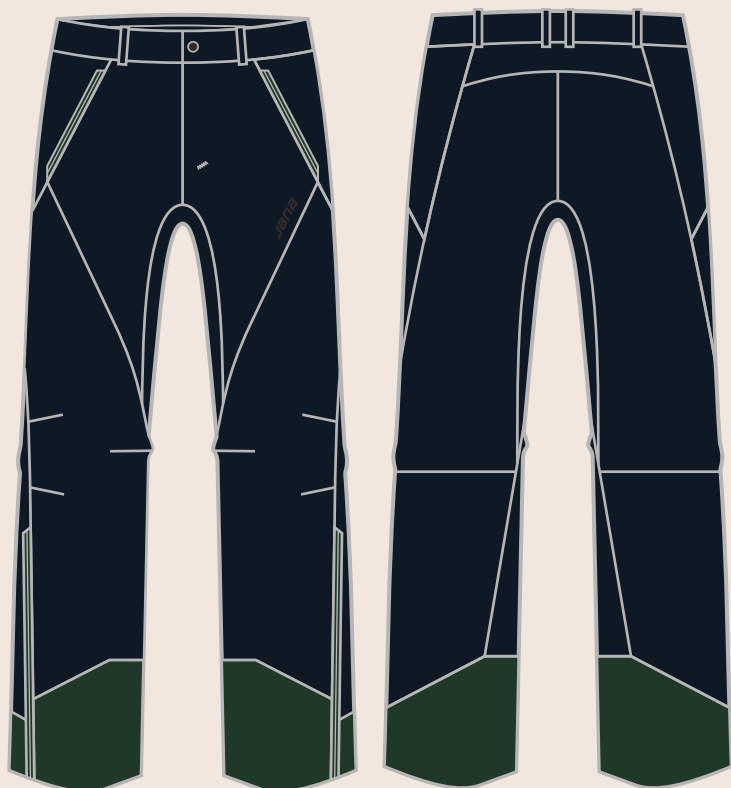
2024 **DESIGNS**
FALL / WINTER

M's DataFlow Pants

-24B080031

-Features-

- * M's 3L high-performance mountaineering pants with technical cutting.
- * Two side pockets and one thigh pocket for storage capacity.
- * The gusseted crotch enhances freedom of movement.
- * Bottom hem with single-hand adjustments inside for easy use.
- * Leg opening with YKK waterproof zipper for convenient use.
- * Reinforced ripstop fabric at the hem improves abrasion resistance.



Fabric: FGCA00117-0001(HF庫存布)

Composition:

Face: 100%Nylon66

Back: 100%Nylon66

Fabric: FGCA00007-0001(HF庫存布)

Composition:

Face: 100%Nylon

Back: 100%Polyester

Mountaineering & Hiking

Jana

2024 **DESIGNS**
FALL / WINTER



W's Pixel Jacket

-24A080032

-Features-

- * Women's 3L high-performance Mountaineering jacket with different color combination.
- * Asymmetric cutlines present cyberpunk style aesthetic.
- * An extra piece at the hood's base maintains the collar's shape when lowered.
- * Inner back collar with bonded fleece to provide comfort.
- * Contrast-color YKK VISLON AquaGuard zipper at center front to give a vivid look.
- * Hand pockets and one inner pocket to store personal belongings.
- * Underarm vents allow efficient body heat release.
- * Sleeve tabs with velcro fasteners for wind-blocking.

Fabric: FACA00257-0009(HF庫存布)

Composition:

91%Recycled nylon, 9%Spandex

Finish: W/P 20000 mmH2O,

MVP 20000 g/m² 24h

Fabric: FGCA00007-0005(HF庫存布)

Composition:

Face: 100%Nylon

Back: 100%Polyester

Mountaineering & Hiking

Jana

2024 **DESIGNS**
FALL / WINTER

W's Pixel Pants

-24B080033

-Features-

- * W's 3L high-performance mountaineering pants with technical cut.
- * Well-fitted shape and articulated knee for better movements.
- * Special bonding adjustments on both left and right waist for better fitting.
- * Side pockets to keep personal belongings.
- * Gusseted crotch enhances freedom of movement.
- * Inseam hem with an extra layer of reinforced ripstop fabric improves abrasion resistance.
- * Special designed single-hand adjustment inside bottom hem with for easy use.



Fabric: FGCA0009-0003(HF庫存布)

Composition: 100% Nylon

Mountaineering & Hiking

Jana

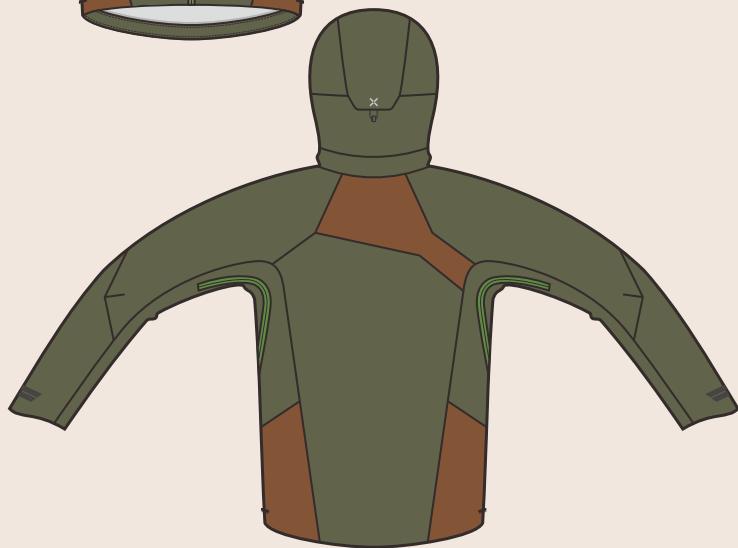
2024 **DESIGNS**
FALL / WINTER

M's Binary Jacket

-24A070074

-Features-

- * Men's 3L high-performance mountaineering jacket with color blocking design.
- * 3L 100% re-PET fabric from Xpore technology with excellent waterproofness and moisture vapor permeability.
- * Integral chin guard giving a clean look.
- * Chest pocket with laser-cut integrated garage and three-dimensional pocket bags for increased storage capacity.
- * Armpit zippers to release body heat.
- * Articulated forward-bending sleeves for great movement
- * Integral cuff gusset with fold-up construction for a more smooth and clean look.



Fabric: OD1106-EWRC-T2AJ2

Composition:

100% Recycle Polyester(20% EWRC)

2/2 Twill 75d/ x 75d

Finish: C0 DWR (80/10)

+ Xpore Agile Membrane 15K x
/ 10K(B1)+20

Fabric: OD1105-EWRC-T2AJ2

Composition:

100 % Recycle Polyester Plain

75d/ x 75d

Finish: C0 DWR (80/10)

+ Xpore Agile Membrane 15Kx
/ 10K(B1)+20

Mountaineering & Hiking

Jana

2024 **DESIGNS**
FALL / WINTER



M's Byte Jacket

-24A080034

-Features-

- * Men's snowboarding Jacket made out of 2L high-performance shell providing high breathability and waterproofness.
- * Padded with 60gm and 100gm insulation; Back panel with down-like fill and stretchy-grid construction for trapping extra heat.
- * Hood lined with brushed mesh at collar; crown can be adjusted easily by an eye-lock buckle at back.
- * Detachable goggle wiper in chest pocket.
- * 2-way side pockets with contrast-color bellow design.
- * Sleeve pocket with 2-opening and bellow design for easy use.
- * Underarm zipped vents with mesh for quick cooling.
- * Soft lycra cuff with wide cuff tab for wind block.
- * One zipped pocket and two mesh pockets on the inside for better storage.
- * A Powderskirt with pants connecting system.

Fabric: FGBA00007-0016(HF庫存布)

Composition:100% Polyester

Fabric: FGBA00026-0007(HF庫存布)

Composition:100% Polyester

Skiing & Snowboarding

Jana

2024 **DESIGNS**
FALL / WINTER

M's Byte Pant -24B080035

-Features-

- * Men's snowboarding pants made out of 2L high-performance shell providing high breathability and waterproofness.
- * Insulated with 40gm lightweight filling and lined with brushed tricot at seat for extra comfort and warmth.
- * Waist adjustment with elastic velcro tabs; higher back waist for extra support.
- * Side pockets with a key hook inside; thigh pockets with contrast-color bellow design.
- * Articulated knees provide enhanced mobility.
- * Inseam zipped vents with mesh for quick cooling.
- * Reinforced inseam welded panels for extra durability.
- * Snapped back hem gusset for easy wear.
- * Equipped with inner gaiters to effectively keep snow out.



Fabric: FGAA00064-0007(HF庫存布)

Composition: 100% Polyester

Skiing & Snowboarding

Jana

2024 **DESIGNS**
FALL / WINTER



W's Quantum Jacket

-24A080036

-Features-

- * Women's snowboarding jacket made out of 2L high-performance shell providing high breathability and waterproofness.
- * Filled with poly fill and Polartec® Alpha™ insulation fabric to provide instant warmth.
- * Contrast-color blocks to give a vivid look.
- * Hood adjustment at front and back to fit the head well.
- * Soft fleece lined inner collar for comfort and warmth.
- * Easy-access zippered chest pocket with additional pocket volume.
- * Large volume hand pockets to store personal belongings.
- * Underarm zipped vents with mesh ventilation system are perfect for quick cooling.
- * Soft lycra cuff with wide cuff tab for wind block.
- * Detachable goggle wiper in chest pocket.

Fabric: FGAA00043-0020(HF庫存布)

Composition: 100% Polyester

Fabric: FGAA00063-000D(HF庫存布)

Composition: 100% Polyester

Fabric: FGAA00063-0007(HF庫存布)

Composition: 100% Polyester

Skiing & Snowboarding

Jana

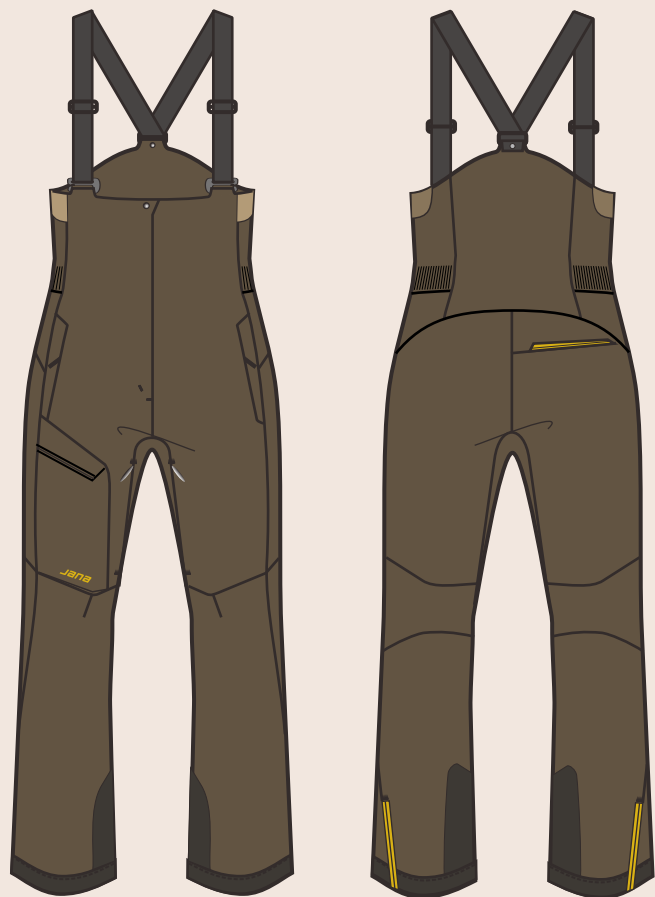
2024 **DESIGNS**
FALL / WINTER

W's Quantum Bib

-24B080037

-Features-

- * Women's 2-layer high-performance snowboarding bib, crafted from premium fabric with ergonomic cutlines for optimal comfort.
- * Insulated with lightweight filling and designed with a welded, semi-elasticated waistband to ensure a perfect fit and unrestricted freedom of movement.
- * Features accessible hand pockets, a rear pocket, and thigh pocket for convenient storage of personal belongings.
- * Articulated knees provide enhanced mobility.
- * Reinforced inseam hem with welded panels for added durability.
- * Equipped with inner gaiters to effectively keep snow out.



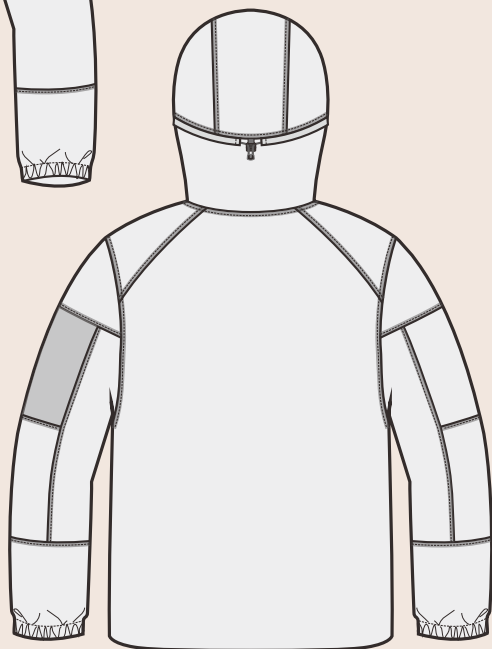
Fabric: FGAA00063-0007(HF庫存布)

Composition: 100% Polyester

Skiing & Snowboarding

Jana

2024 **DESIGNS**
FALL / WINTER



M's Neura DOWN Jacket

-24A080038

-Features-

- * Men's down jacket made from a high-performance translucent shell, offering a soft and comfortable feel.
- * Innovative streamlined seam design enhances the jacket's modern aesthetic.
- * The design utilizes the translucent fabric effect, combined with the French seam finish and black pocket fabric, to add a layered visual effect of transparency.
- * Premium down insulation filled with 90% goose down and 10% feathers, offering exceptional warmth, loft, and a stylish silhouette.
- * The hood features an internal aluminum wire in the brim, allowing for adjustable shaping to maintain structure and prevent sagging.
- * Elasticated cuffs with grip details offers a secure fit with functional and stylish grip details.
- * Multiple zippered pockets, strategically positioned for a modern and functional aesthetic, offer secure storage for small essentials.

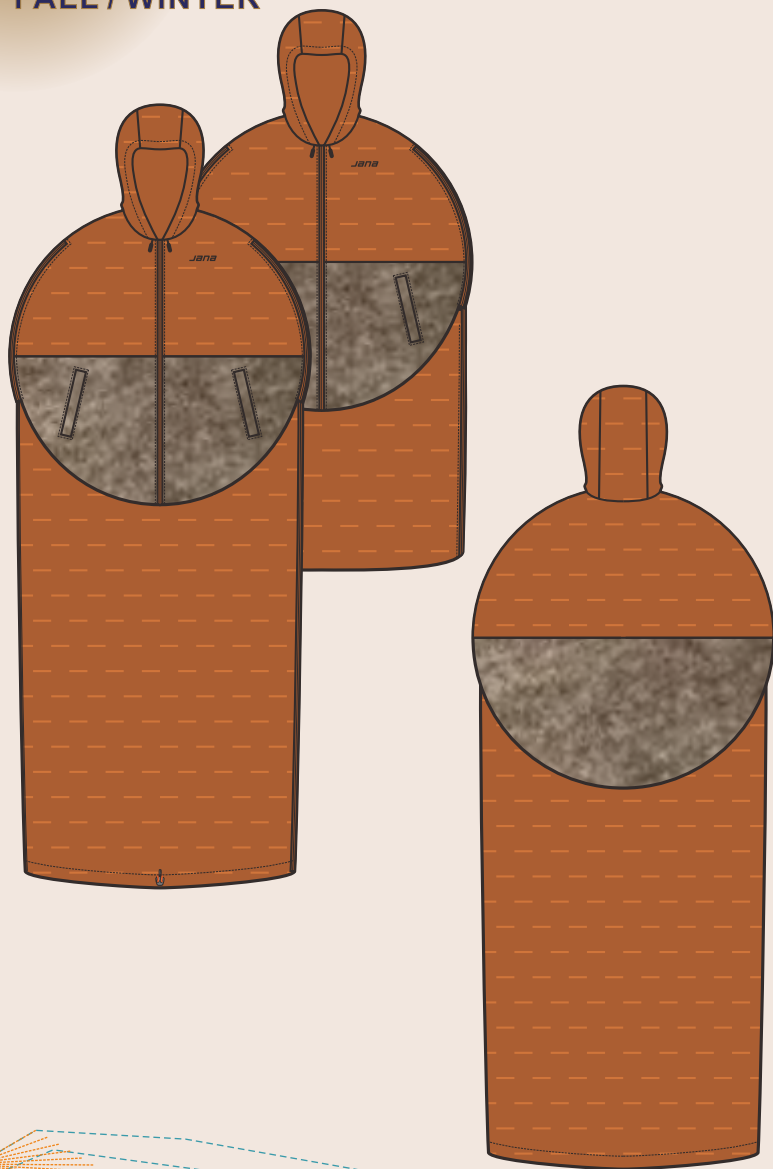
Fabric: 24W-1020

Composition: 100% Nylon

Camping & Multi-functional

Jana

2024 **DESIGNS**
FALL / WINTER



Unisex Neura DOWN Napsack

-24C080039-A

-Features-

- * The unisex napsack, made from a high-performance shell offering a soft and comfortable feel, is ideal for camping activities and can be worn like a puffy coat.
- * Premium down insulation filled with 90% goose down and 10% feathers, providing exceptional warmth, loft, and a stylish silhouette.
- * The zippers on the shoulders allow you to extend your arms, while the adjustable bottom lets you shorten it when worn or tighten it to transform into a sleeping bag.
- * Side welt pockets create storage capacity and improve accessibility.
- * The hem is removable and can be packed into a compact bag, which doubles as a pillow for added convenience.
- * Offers the convenience of staying warm in your sleeping bag while still being able to crawl back into your tent without leaving its warmth.
- * The hood features an adjustable system at the opening, allowing for shaping to maintain structure and prevent sagging.

Fabric: 24W-1015(管道布)

Composition:
84% Nylon+16% Spandex

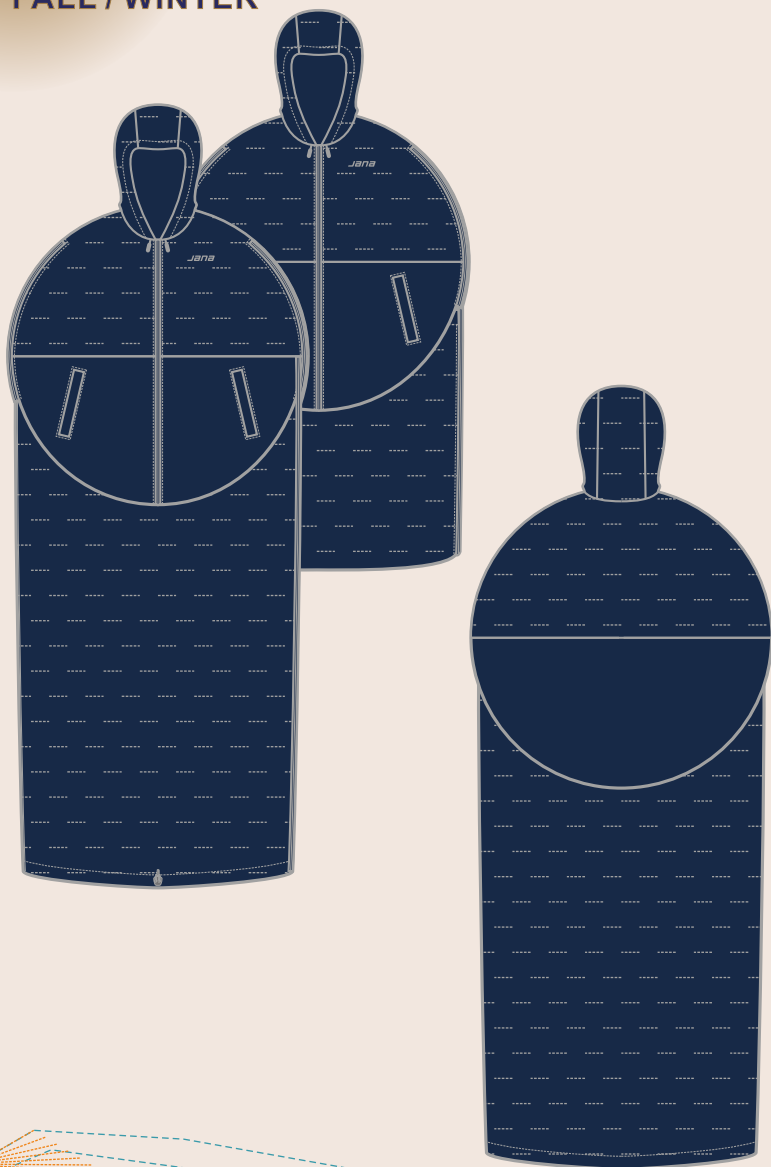
Fabric: 24W-1016

Composition: 100%Poly
Two Side Brushed
Finish: Anti-Pilling with
PFAS Free DWR

Camping & Multi-functional

Jana

2024 **DESIGNS**
FALL / WINTER



Unisex Neura DOWN Napsack

-24C080039-B

-Features-

- * The unisex napsack, made from a high-performance shell offering a soft and comfortable feel, is ideal for camping activities and can be worn like a puffy coat.
- * Premium down insulation filled with 90% goose down and 10% feathers, providing exceptional warmth, loft, and a stylish silhouette.
- * The zippers on the shoulders allow you to extend your arms, while the adjustable bottom lets you shorten it when worn or tighten it to transform into a sleeping bag.
- * Side welt pockets create storage capacity and improve accessibility.
- * The hem is removable and can be packed into a compact bag, which doubles as a pillow for added convenience.
- * Offers the convenience of staying warm in your sleeping bag while still being able to crawl back into your tent without leaving its warmth.
- * The hood features an adjustable system at the opening, allowing for shaping to maintain structure and prevent sagging.

Fabric: FDMA01565-000C(HF庫存布)

Composition: 100% Nylon

Finish: Cire, WR, C6

Fabric: 24W-1017

Composition:

95% Polyester+5% Spandex

4 Way Stretch, Double weave

Camping & Multi-functional

Jana

2024 **DESIGNS**
FALL / WINTER

Unisex Synapse Bomber Jacket

-24A080040-A

-Features-

- * The unisex 2L bomber jacket with fully seam sealed for waterproofness.
- * Layering with down vest underneath for extra warmth.
- * Hand pockets with zipper closure underneath wide flaps for personal belongings.
- * Left sleeve pocket with bellow provides additional storage capacity.
- * Elasticated cuff and bottom hem with welded ladder-shape glued film for better fit and unique appearance.



Fabric: GEL8595-X 2L(台北庫存布)

Composition:

Urban & Lifestyle

Jana

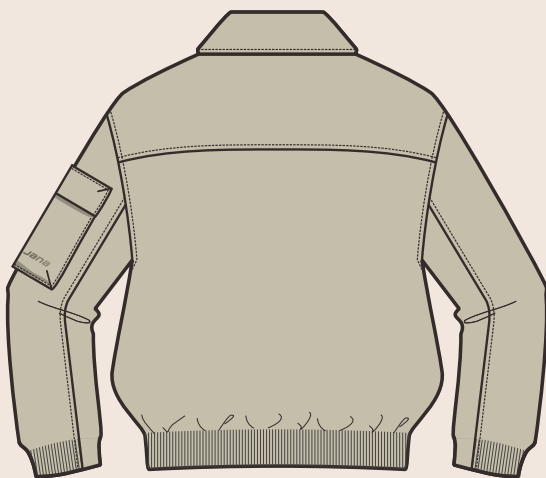
2024 **DESIGNS**
FALL / WINTER

Unisex Synapse Bomber Jacket

-24A080040-B

-Features-

- * The unisex windbreaker bomber jacket made from shimmering honeycomb texture recycle polyester.
- * Layering with down vest underneath for extra warmth.
- * YKK METALUXE® zipper at center front with mirror like 2-tone polish finish to create a science-fictional look.
- * Hand pockets with zipper closure underneath wide flaps for personal belongings.
- * Left sleeve pocket with bellow provide additional storage capacity.
- * Elasticated cuff and bottom with welded ladder-shape glued film for better fit and unique appearance.



Fabric: 24W-1019

Composition:

53% Recycle Polyester+47% Polyester

Honeycomb with back Cire

Urban & Lifestyle

Jana

2024 **DESIGNS**
FALL / WINTER

W's Algorithmic Trench Coat

-24A080041-A

-Features-

- * Women's urban trench with fully seam sealed for waterproofness.
- * Layering with down vest above for extra warmth and chic look.
- * Comfortably roomy design, ensuring an unrestricted fit.
- * Storm flap at center front with snap buttons closure.
- * Waist adjustment system for better fit.
- * Loose shape collar with adjustment system at back to prevent the wind from getting in.
- * Double darts at elbow part for dramatic puff sleeve.
- * Multiple cargo pockets to store your daily essentials.



Fabric: FGAA00066-0009(HF庫存布)

Composition: 100% Polyester

Urban & Lifestyle

Jana

2024 **DESIGNS**
FALL / WINTER

W's Algorithmic Trench Coat

-24A080041-B

-Features-

- * Women's urban trench with fully seam sealed for waterproofness.
- * Layering with down vest above for extra warmth and chic look.
- * Comfortably roomy design, ensuring an unrestricted fit.
- * Storm flap at center front with snap buttons closure.
- * Waist adjustment system for better fit.
- * Loose shape collar with adjustment system at back to prevent the wind from getting in.
- * Double darts at elbow part for dramatic puff sleeve.
- * Multiple cargo pockets to store your daily essentials.



Fabric: FGAA00066-0003(HF庫存布)

Composition: 100% Polyester

Urban & Lifestyle

Jana

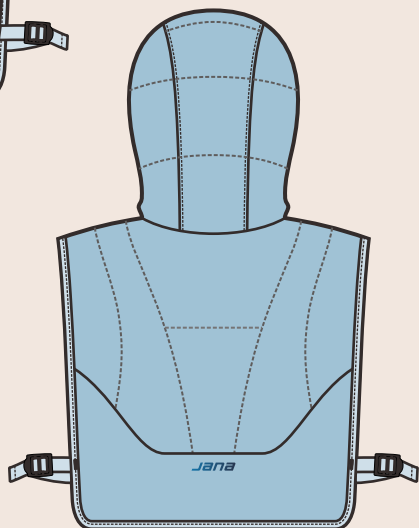
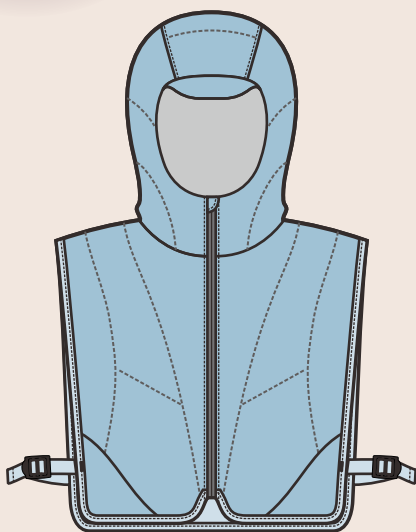
2024 **DESIGNS**
FALL / WINTER

Unisex Logic Down Vest

-24C090053

-Features-

- * Unisex hooded down vest with 650FP 90/10 duck down.
- * 100% nylon fabric with shimmering effect.
- * Perfect for layering above or underneath jackets for extra warmth.
- * Side opening with magnetic buckle for easy adjustment.



Fabric: 24W-1021

Composition: 100% Nylon

Urban & Lifestyle

Jana

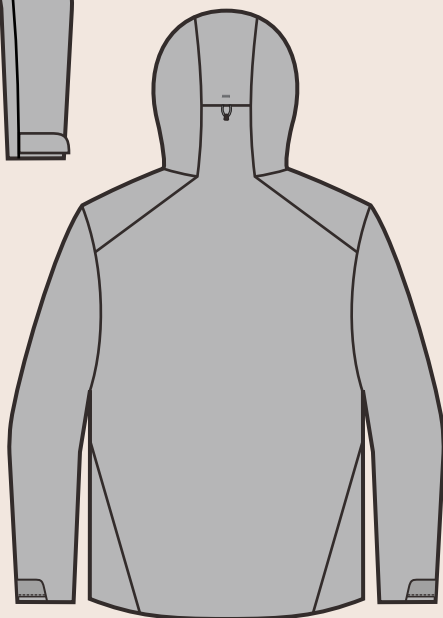
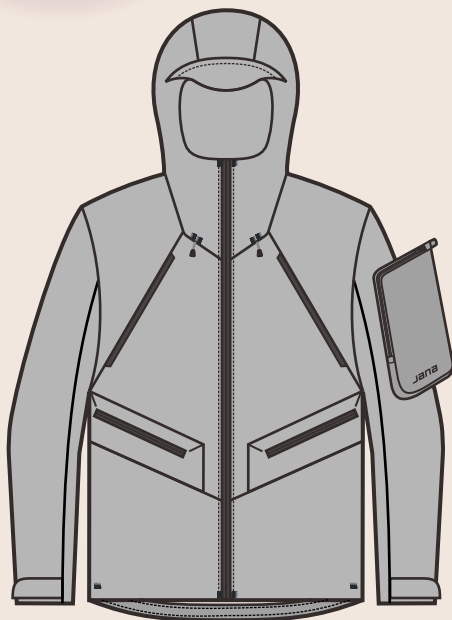
2024 **DESIGNS**
FALL / WINTER

M's Synth multi-funtional Jacket

-24A090054

-Features-

- * Men's multi-functional 2L jacket made from a high-performance shell, offering excellent breathability and waterproofing, ideal for both outdoor and urban environments.
- * High-coverage hood with an extended collar provides superior protection against wind and rain.
- * Multiple zippered pockets, strategically positioned for a modern and functional aesthetic, offer secure storage for small essentials.
- * Side pockets feature pleats on both sides, creating a three-dimensional structure for increased storage capacity and improved accessibility.
- * The left sleeve includes a three-dimensional zippered pocket, adding a futuristic, cyberpunk aesthetic while providing additional storage space.
- * Embedded velcro straps at the cuffs ensure a clean appearance while allowing for easy adjustment and a secure fit.
- * Adjustable hem with drawstrings allows for a customizable fit and enhanced wind protection.



Fabric: FGAA00063-000C(HF庫存布)

Composition: 100% Polyester

Urban & Lifestyle

Jana

2024 **DESIGNS**
FALL / WINTER



M's Cyber Jacket

-24A070075

-Features-

- * Men's 3L golf jacket made with 100% re-PET fabric from Xpore technology with excellent waterproofness and moisture vapor permeability.
- * Hand pockets with integrated garage to store your daily essentials.
- * Hidden mesh panel at the back offers better air convection.
- * Cuff tabs with soft velcro adjustment fits the wearer's wrist.
- * Reflective logos for a stylish look and safety concern.
- * Adjustment system at hem on both sides ensures a good fit for the body.

Fabric: OD694-RC-R2AJ2(電紡膜)

Composition: 55%Polyester, 45%Recycle Polyester

Finish: C0 DWR (80/10)

+ Xpore Airtech Membrane 10Kx / >0.3(Air permeability)

+ 100%Polyester 20D Jersey

Golf